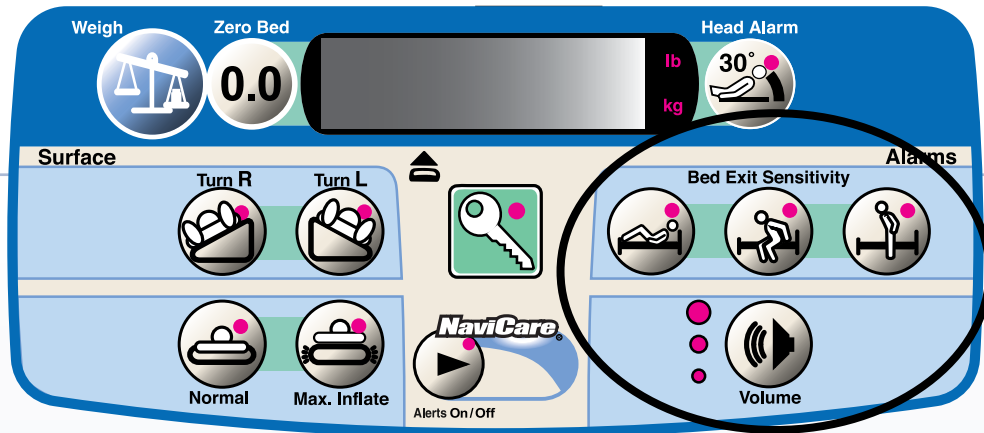


## Hill-Rom®

### VersaCare® Bed and VersaCare® TC Bed Bed Exit – Patient Positioning Monitor



## Help Prevent Patient Falls.

### At a glance

- The Bed Exit System will set and operate at any head articulation 0 - 60 degrees.
- The Bed Exit System has been designed to allow the patient to move their head section up and down after the Bed Exit System mode has been set without causing the alarm to activate inadvertently.
- Equipment weighing up to 30 lbs. can be added to the foot section after the bed exit alarm is set without affecting the Bed Exit System's performance.
- A local alarm will sound if a weight greater than 30 lbs. is added to the bed. This will alert the staff if the Bed Exit System alarm has been compromised. It is also intended to alert family members to not sit on the bed while patient is being monitored for possible bed exit.
- The Bed Exit System has three levels of bedside alarm volume that can be adjusted at the bedside for daytime and nighttime usage.
- The Bed Exit System can also be connected to the nurse call system to allow a nurse call to be sent to the nurses' station when the alarm is activated.
- The combination of volume adjustment and nurse call can be used to minimize loud alarms in semi-private rooms.

### Patient Position/Movement Mode

The Patient Position/Movement mode alarms when the patient moves towards either siderail or moves away from the head section, such as sitting up in bed. This mode should be used when a caregiver wants to be alerted when the patient begins to move.



### Bed Exiting Mode

The Bed Exiting mode alarms when a patient moves away from the center of the bed towards an egress point. This mode should be used when a caregiver wants to be alerted when a potential egress is attempted.



### Out-of-Bed Mode

The Out-of-Bed mode alarms when the patient's weight shifts significantly off the frame of the bed.



This mode should be used when a caregiver wants the patient to move freely within the bed, but to be alerted when the patient leaves the bed.

Hill-Rom reserves the right to make changes without notice in design, specifications and models. The only warranty Hill-Rom makes is the express written warranty extended on the sale or rental of its products.

© 2008 Hill-Rom Services, Inc ALL RIGHTS RESERVED.

# Hill-Rom

Enhancing Outcomes for Patients and Their Caregivers.™

USA 800-445-3730  
Canada 800-267-2337

[www.hill-rom.com](http://www.hill-rom.com)